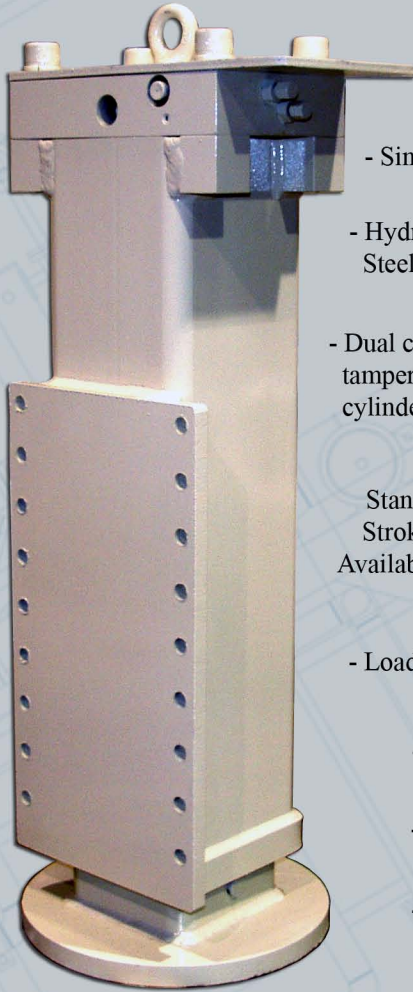
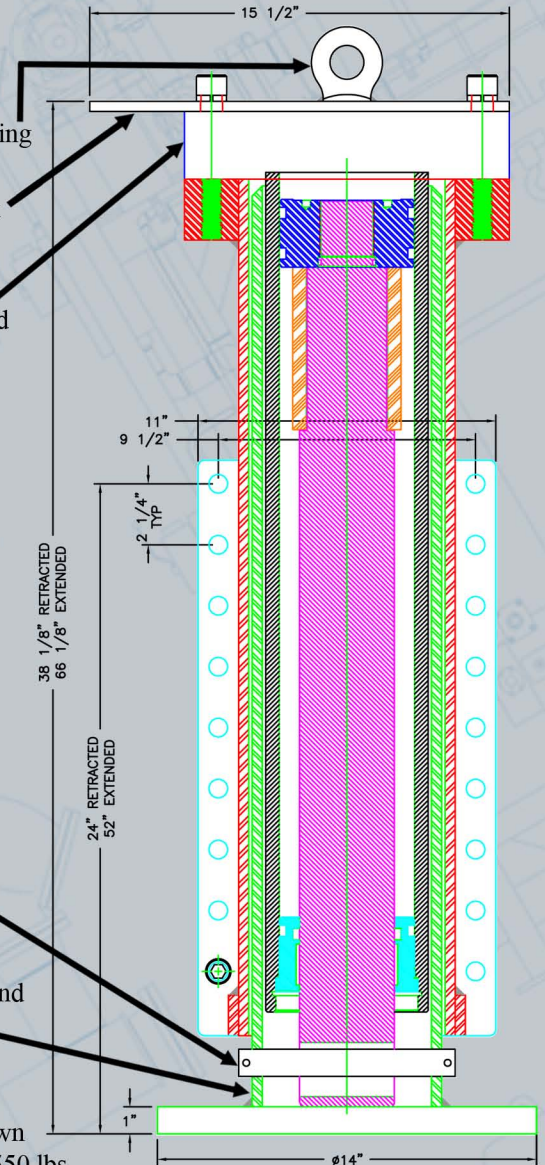


## Outrigger



- Single Lifting Point for Convenient Handling
- Hydraulic Ports are Protected by 3/8" Thick Steel Guard
- Dual counterbalance valves are factory set and tamper resistant. They are integrated into the cylinder cap.
- Standard Bores include 5" and 6" with Strokes from 18" to 36". Other Sizes are Available. Contact EHA for More Information
- Load Holding Pins Available as an Option
- 2500 PSI Operating Pressure
- Repairable Cylinder Design
- Floating Pin provides Side Load from affecting cylinder
- Telescoping Steel Shell protects Cylinder and Rod from debris and outside elements throughout Stroke.



\* 5x18" Shown  
 Dry Weight 550 lbs  
 Static Load 40,000 lbs



## Outrigger Power Units

- 13 HP Honda Engine with Electric Start
- 2500 PSI/3.2 GPM Fixed Displacement Pump
- Reservoir with Filler/Breather, Sight Glass with Thermometer
- Spin-on Return Filter
- DC Power Units also available
- Custom Layouts and Options Available

# EHA ELECTRO-HYDRAULIC AUTOMATION

